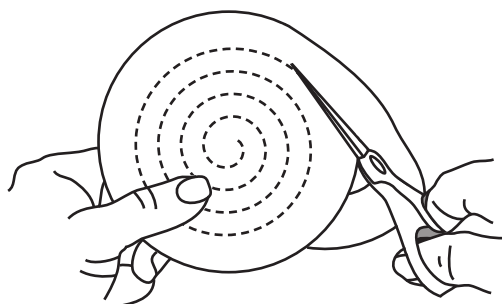
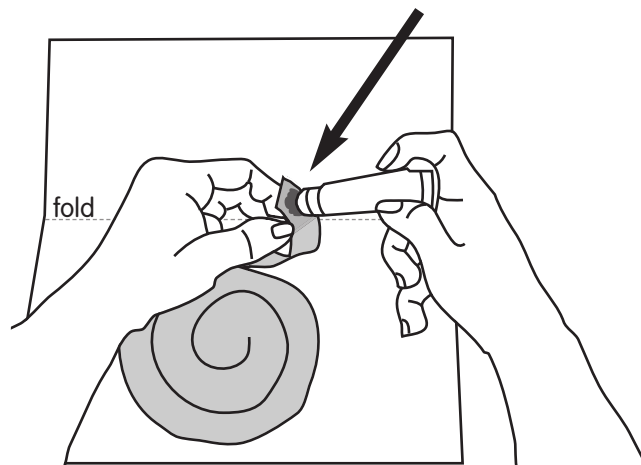


# SIMPLE SPIRAL POP-UP CARD

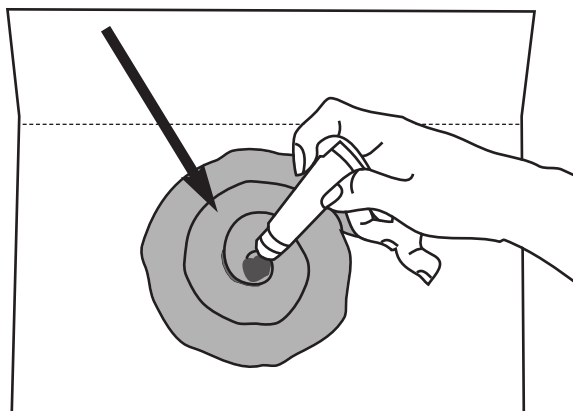
Use 22.9 cm x 30.5 cm (9" x 12") construction paper.



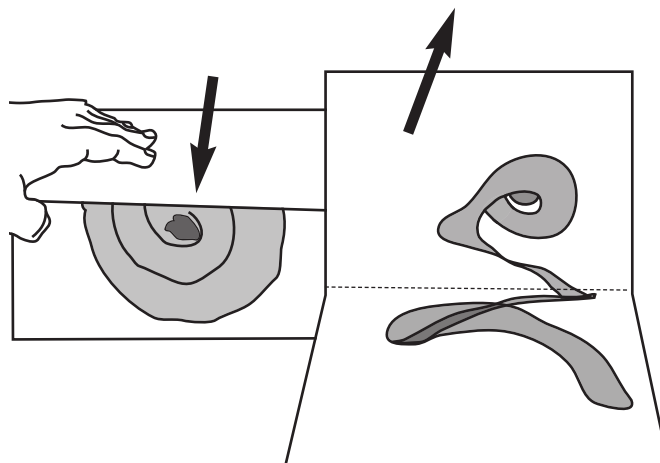
1.
  - Cut a large circle out of 1/4 of a piece of construction paper.
  - Cut a spiral into the circle.
  - Let the outer edge guide you as you cut around and around until you get to the centre.



2.
  - Fold a piece of 22.9 cm x 30.5 cm construction paper in half widthwise.
  - Open the paper.
  - Place the spiral near the centre of the bottom half of the paper.
  - Apply some glue to the **back** of one end of the spiral.
  - Glue it in place.



3.
  - Apply glue to the **front** of the other end of the spiral.



4.
  - Close the paper and press it flat.
  - Open the paper to see how the spiral pops up.
  - Glue simple shapes and contrasting colours of construction paper to the spiral and the background paper.
  - Open and close the card to see how it pops up.